

LinkedIn Post:

Abitibi Metals Corp. (AMQ: CSE)

Abitibi expands mineralization with successful step-out drilling at B26 Deposit, Abitibi, Québec

Abitibi Metals reported on July 21, 2025, the ongoing progress on its Phase 3 drill program at the B26 Polymetallic Deposit in Québec. Up to 6 holes have been completed for a total of 4,829 m in phase 3. High-priority expansion zones across the western, down-plunge, and southeastern extensions of the B26 mineralized system are being tested by 2 drill rigs active on site; with a third to be soon active. On June 18, 2025, Abitibi Metals had reported the recommencement of its Phase 3 drill program at the B26 Polymetallic Project located ~5 km SE of the past-producing Selbaie Mine and ~170 km north of the Horne Smelter in Rouyn-Noranda. The B26 Deposit hosts a current Mineral Resource Estimate ("MRE") with Indicated Resource of 11.3MT @ 2.13% Cu Eq (1.23% Cu, 1.27% Zn, 0.46 g/t Au and 31.9 g/t Ag) and Inferred of 7.2MT @ 2.21% Cu Eq (1.56% Cu, 0.17% Zn, 0.87 g/t Au and 7.4 g/t Ag). Abitibi Metals currently owns 50% of the B26 Deposit and retains the option to earn an additional 30% from SOQUEM Inc.

B26's Expansion Potential: Drilling has successfully intersected mineralization outside the current MRE, confirming expansion potential in multiple directions. With ~1.8 km of strike length and excellent vertical continuity, the 2024 mineral estimate of B26 outlines a total resource of 18.5MT @ 2.16% Cu Eq and the current drilling demonstrates that the system remains open in multiple directions. There is a reasonable opportunity to significantly grow the current resources and this position Abitibi Metals as a compelling copper growth play located in the heart of the Québec Abitibi - a good jurisdiction.

Good visuals: Abitibi has completed several key step-out holes designed to investigate the boundaries of the current resource model. Visual analysis of core indicates strong mineralization in multiple holes. Salient highlights include:

1274-17-269-W1b: Intersected a mineralized zone ~80m beyond the existing MRE, representing a meaningful step-out and validating continued growth potential. This hole encountered a heavily mineralized interval of 6.6 m from 993.0 within a broader 17.4-metre mineralized package of copper stringers between 982.2 and 999.6 m downhole; assays are pending within this key growth corridor.

1274-17-269-W2b: Currently in progress, targeting an additional 80-metre step-out from hole 1274-24-338W1 in the eastern extension, aimed at following up on previously intersected mineralization.

1274-25-367: Drilling has been completed with core processing in progress, targeting an additional 80-metre step-out from hole 1274-14-182 in the eastern extension, aimed at following up on previously intersected mineralization.

1274-25-368: Currently in progress, targeting an additional 160-metre step-out from hole 1274-16-234 in the eastern extension, aimed at following up on previously intersected mineralization.

Strategic Focus of Phase 3 Program: With up to 17,500 m planned in Phase 3, drilling is focused on multiple targets: i) Western Extension - multiple holes are testing the western strike of high-grade Cu-Au lenses, targeting continuity up to several hundred metres beyond the current model; ii) Eastern Extension - 6 holes to test the eastern extension of the deposit in the vicinity of the N-S diabase dyke; iii) Down-Plunge Growth - deeper drilling aims to extend the interpreted plunge of the Cu-Au system with potential additional high-grade lenses at depth; iv) Southeastern Gravimetric Anomaly - a large untested geophysical target southeast of the main zone, situated along the plunge vector, is now being drilled and may represent a blind lens and have the potential for a massive extension of the mineralized system. v) Central Zone Step-Outs and Infill – drill holes are designed to improve model confidence and continuity as well as testing lateral expansion potential in zones with prior high-grade hits (>2.0% CuEq); and vi) Branch Hole Strategy - directional drilling technology is being used from existing

collars to efficiently test multiple orientations around positive results, minimizing time and reducing drilling costs.

All targets were selected based on 3D modelling of the updated 2024 resource, historical drilling, and advanced geophysical interpretations (see: https://www.linkedin.com/posts/eric-lemieux-9468715_quebec-abitibi-b26-activity-7348707540962054145-Zb0B?utm_source=share&utm_medium=member_desktop&rcm=ACoAAEEcwYBYv9IQ3WvNxLu2IPkWSB479Ajztl).

What is next: Initial assay results from Phase 3 are expected in the coming month and shall continue throughout the remainder of 2025. Abitibi Metals is fully funded to Q1, 2027, and has budgeted ~25,000 additional metres for Phase 4 drilling, to be strategically deployed in 2026 based on ongoing exploration success.

Jonathon Deluce, CEO of Abitibi Metals commented: *"What's particularly exciting is the volume of high-grade mineralization sitting outside the current resource model. The holes being drilled in this phase 3 program have the potential to rapidly convert the open zones into a new phase of resource growth — and that's where a company value re-rating begins. It's also important to highlight that results from our Phase 2 drill program were not included in the recent resource update, underscoring the additional future upside for Abitibi Metals".*

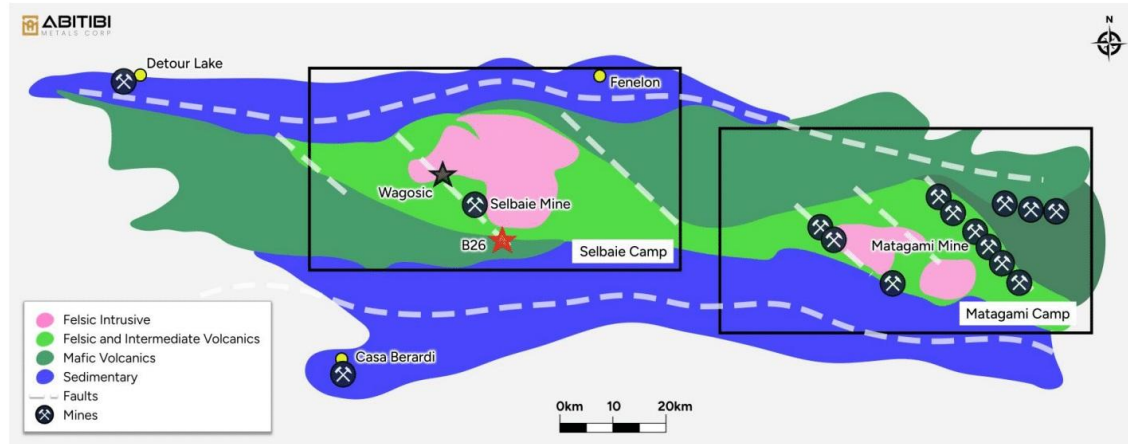
See end: <https://www.linkedin.com/pulse/abitibi-metals-corp-amq-cse-expands-mid-level-copper-zones-lemieux-omxoe/?trackingId=37O72PV8TkO0l%2BtNRBdOHA%3D%3D>

<https://abitibimetals.com/abitibi-metals-expands-mineralization-with-successful-step-out-drilling-at-b26-deposit/>

Regional Geology: Selbaie Camp - B26 geologic environment:



abitibimetals.com



Selbaie Camp

- Total production 53Mt
- 1 mine

Largest deposit : Selbaie Mine

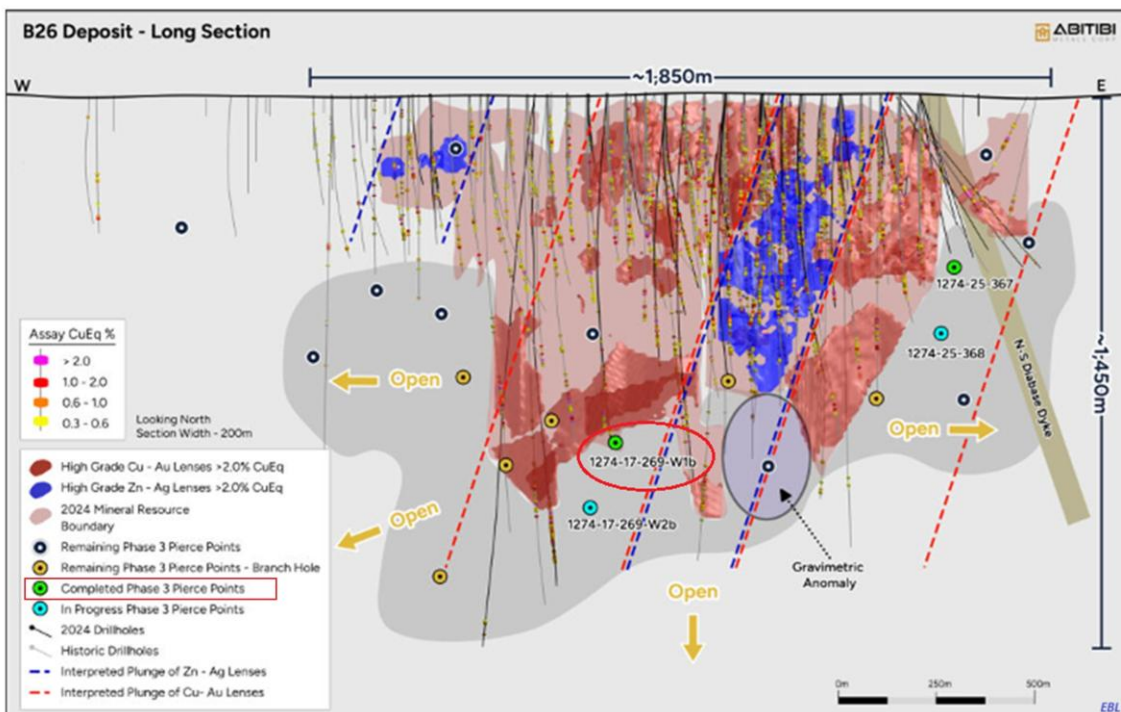
- 56,9 Mt @ 1,9% CuEq

Matagami Camp

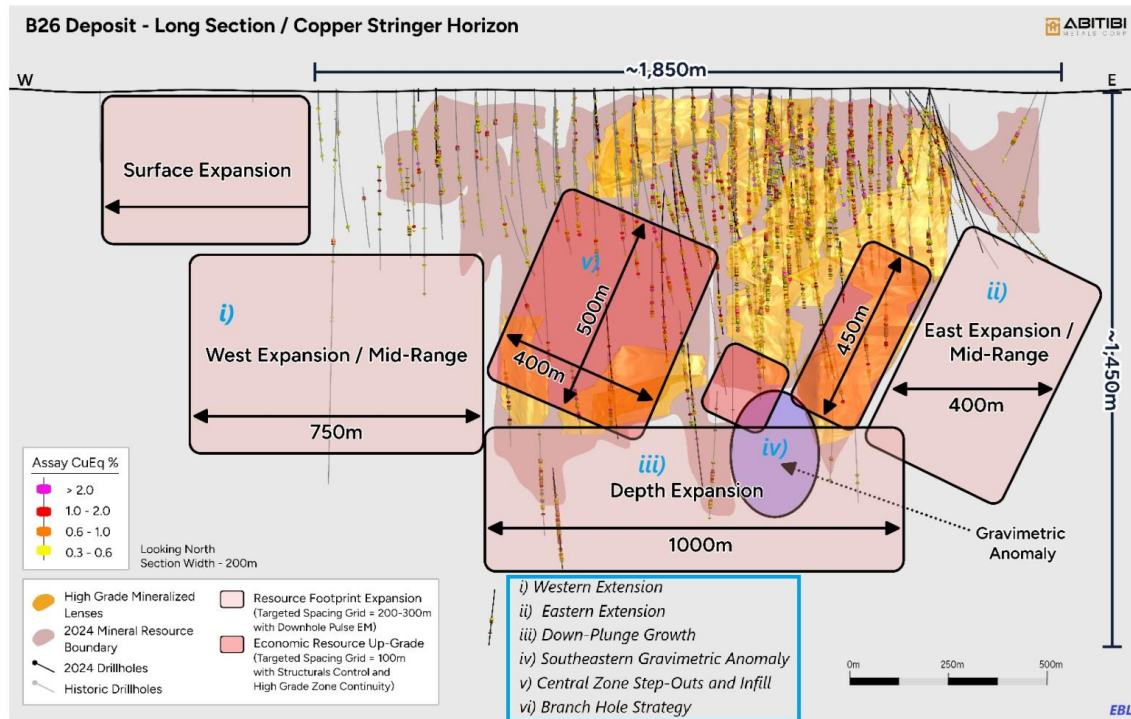
- Total production 64Mt
- 20 mines

Largest deposit : Matagami Lake Mine

- 25,4 Mt @ 3,6% CuEq



B26 Long Section with Holes Completed



B26 Deposit-Long Section Target Summary

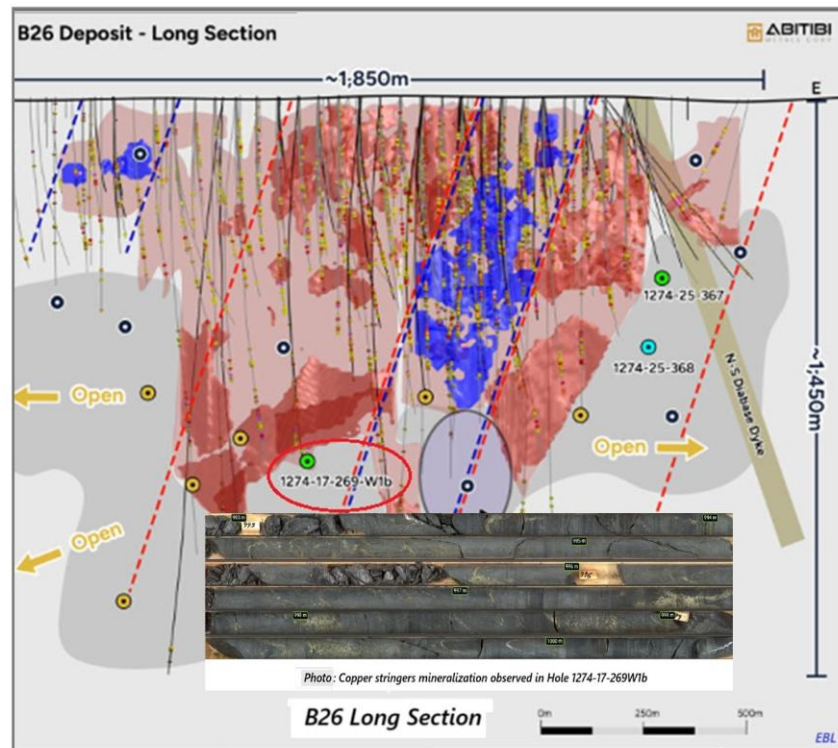


Figure: Copper stringers mineralization observed in Hole 1274-17-269W1b

Important Disclosures

Company	Ticker	Disclosures*
Abitibi Metals Corp.	AMQ: CSE	B, R

* Legend

- A The Mining Analyst, in his own account or in a family related account, owns securities in excess of 1,000 shares of the issued and outstanding equity securities of this issuer.
- B The Mining Analyst, in his own account or in a family related account, owns securities in excess of 10,000 shares of the issued and outstanding equity securities of this issuer.
- C The Mining Analyst, in his own account or in a family related account, owns securities in excess of 30,000 shares of the issued and outstanding equity securities of this issuer.
- D The Mining Analyst, in his own account or in a family related account, owns securities in excess of 50,000 shares of the issued and outstanding equity securities of this issuer.
- E The Mining Analyst, in his own account or in a family related account, owns securities in excess of 100,000 shares of the issued and outstanding equity securities of this issuer.
- F The Mining Analyst, in his own account or in a family related account, owns securities in excess of 250,000 shares of the issued and outstanding equity securities of this issuer.
- V The Mining Analyst has visited certain material operations of this issuer.
- P This issuer paid a portion of the travel-related expenses incurred by the Mining Analyst to visit material operations of this issuer.
- Q This issuer has directly paid the Mining Analyst.
- R This issuer has indirectly paid the Mining Analyst.

Mining Analyst Certification

I, Éric Lemieux, Mining Analyst, hereby certify that the comments and opinions expressed in this report accurately reflect my personal views about the subject and the issuer.

I determine and have final say over which companies are included in my research and do not have direct or indirect remuneration unless disclosed.

This report has been prepared for general information purposes only and should not be considered either a solicitation for the purchase or an offer of securities. This research note does not constitute a recommendation.

The securities mentioned in this report may not be suitable for all types of investors. The information contained in this report is not intended as individual investment advice and is not designed to meet any particular investment objectives, financial situations, or needs. Nothing in this report constitutes legal, accounting or tax advice.