

LinkedIn Post: https://www.linkedin.com/posts/eric-lemieux-9468715_quebec-abitibi-b26-activity-7348707540962054145-Zb0B?utm_source=share&utm_medium=member_desktop&rcm=ACoAAAEcwYBYv9IQ3WrNxLu2IPkWSB479Ajztl

Abitibi Metals Corp. (AMQ: CSE)

Abitibi Metals outlines 8.7 Km of high-priority drill targets from VTEM™ survey at B26 Project, Abitibi, Québec

Abitibi Metals announced on July 7, 2025, the results of a recently completed VTEM™ (Versatile Time Domain Electromagnetic) airborne geophysical survey over the B26 Polymetallic Project, located in the prolific Abitibi Greenstone Belt of Québec. Recall on June 18, 2025, Abitibi Metals had reported the restart of its Phase 3 drill program at the B26 Polymetallic Project located ~5 km SE of the past-producing Selbaie Mine and ~170 km north of the Horne Smelter in Rouyn-Noranda (see : https://www.linkedin.com/posts/eric-lemieux-9468715_quebec-abitibi-b26-activity-7341869978746298368-s2V?utm_source=share&utm_medium=member_desktop&rcm=ACoAAAEcwYBYv9IQ3WrNxLu2IPkWSB479Ajztl). Abitibi Metals currently owns 50% of the B26 Deposit and retains the option to earn an additional 30% from SOQUEM Inc. The B26 Deposit hosts a current Indicated Resource of 11.3MT @ 2.13% Cu Eq (1.23% Cu, 1.27% Zn, 0.46 g/t Au and 31.9 g/t Ag) and 7.2MT @ 2.21% Cu Eq (1.56% Cu, 0.17% Zn, 0.87 g/t Au and 7.4 g/t Ag) in Inferred.

Successful survey completion and data validation: The VTEM™ geophysics survey successfully delineated 8.7 km of high-priority conductive horizon targets, several of which are located along strike and at depth from the known B26 Deposit. The survey has been successfully completed over the B26 Project, with all data processed and validated by Geotech Ltd.

The copper stringer zone at B26 displays a well-defined conductive response, while the main zinc-rich ore body remains non-conductive. Despite this, a potential 1.3 km western extension of the main deposit has been identified. This zone is characterized by a low magnetic signature and is supported by early-stage indications of zinc and silver mineralization in drilling.

Emerging new VMS targets along Enjalran–Brouillan contact and towards

Selbaie: Along the Enjalran–Brouillan contact, 2 new high-priority targets have been delineated exhibiting geophysical and geological characteristics similar to the B26 Polymetallic Deposit. These targets represent an additional 3.4 km of prospective strike length for follow-up exploration. Supporting elements include: i) Comparable VTEM™ conductive and magnetic responses; ii) A favourable geological context marked by the presence of felsic volcanic (rhyolite) units; iii) Historical drill intercepts containing chalcopyrite (the primary copper-bearing mineral at B26), as well as the presence of sphalerite and silver mineralization.

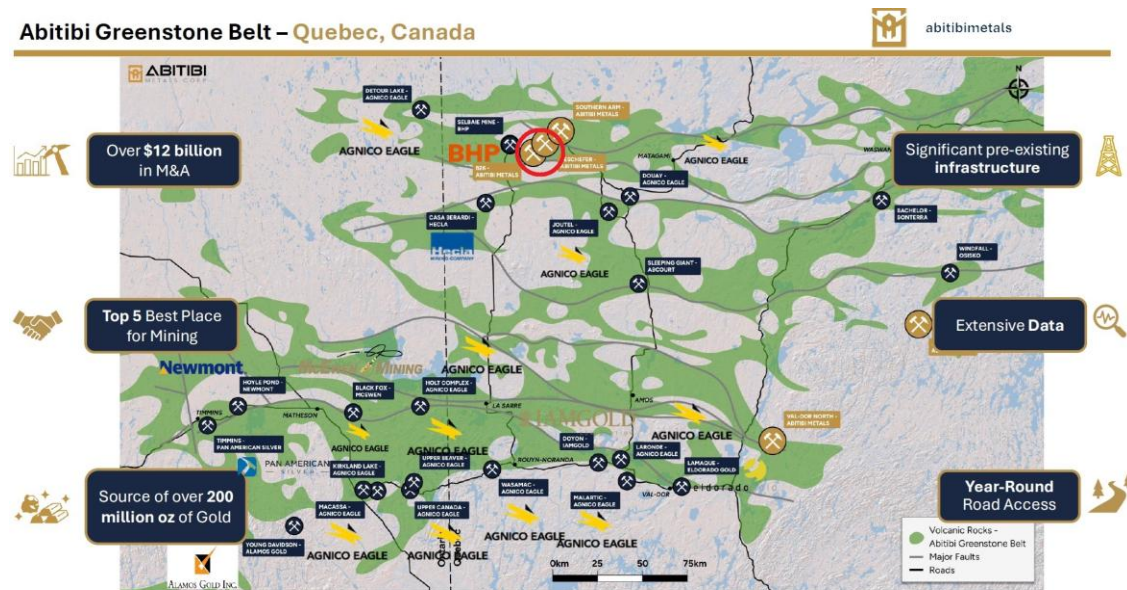
Also notably, 2 discrete conductive anomalies have been identified along the corridor between the B26 Deposit and the past-producing Selbaie Mine. The former Selbaie Mine produced 56.9 Mt @ 0.87% Cu, 1.85% Zn, 39 g/t Ag, and 0.55 g/t Au. Based on Geotech's interpretation, these anomalies are consistent with a favourable VMS (Volcanogenic Massive Sulphide) environment. To refine these targets, advanced geophysical inversion and Maxwell modeling are recommended to better constrain geometry, depth, and drill targeting. These anomalies collectively outline an additional 4 km of mineralized trend for systematic exploration.

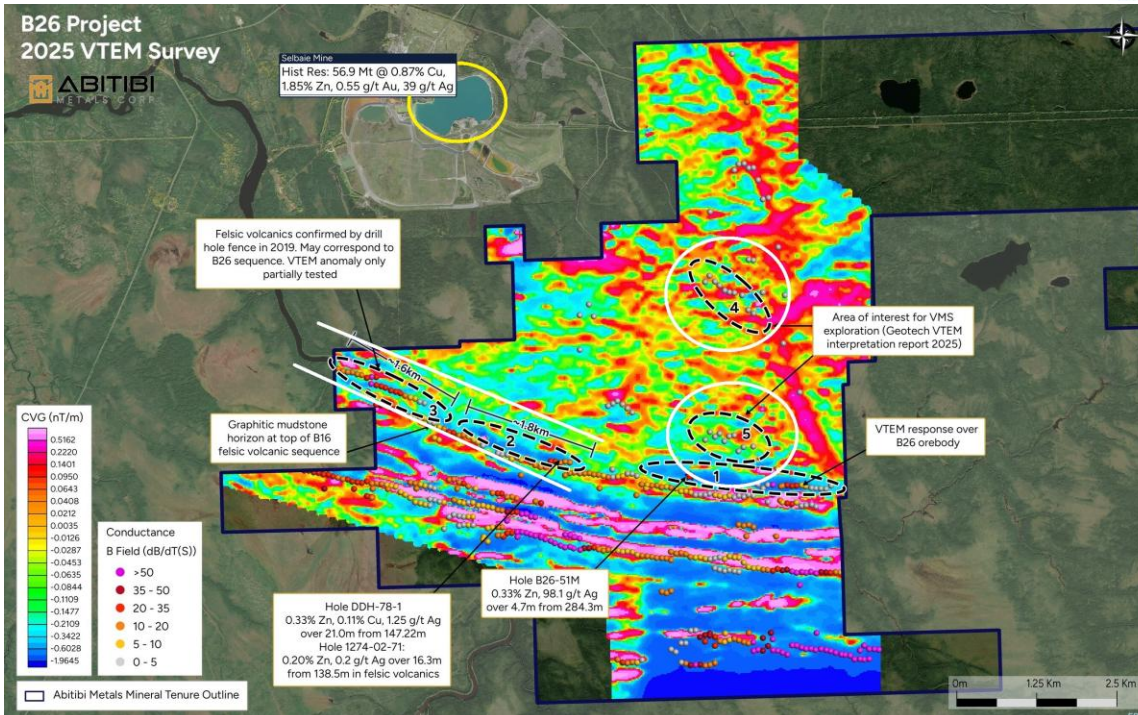
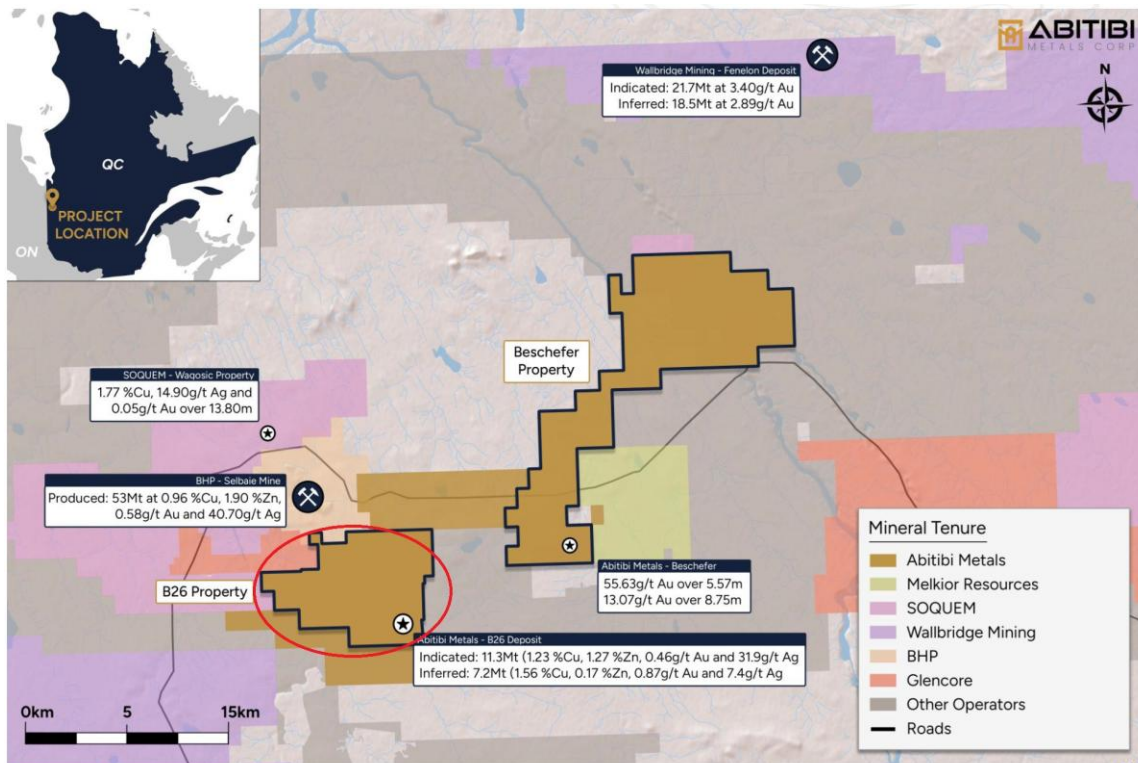
Next Steps: Integration of VTEM results with existing geophysical and geological data sets shall further refine exploration models across the B26 Property. Abitibi Metals is planning property wide program of 2,000 to 4,000 m follow-up drill program, expected to commence where accessible during the Phase 3 Program with the remaining in winter 2026, focusing on high-priority targets defined by the VTEM data and compilation of historical results from geophysical surveys and drilling.

Jonathon Deluce, CEO of Abitibi Metals stated: *"The VTEM™ results confirm what we were hoping for, showing several areas with strong potential for new discoveries. These results build a solid pipeline of new drill targets to support our ongoing infill and step-out drilling at B26. They also strengthen our ability to define and prioritize regional targets, which make up one of the key pillars of our Phase 3 drill program".*

See end: <https://www.linkedin.com/pulse/abitibi-metals-corp-amq-cse-expands-mid-level-copper-zones-lemieux-omxoe/?trackingId=37O72PV8TkO0I%2BtRBdOHA%3D%3D>

<https://abitibimetals.com/abitibi-metals-outlines-8-7-kilometres-of-high-priority-drill-targets-from-vtem-survey-at-b26-project/>







EBL Consultants enr.

Eric Lemieux, MSc, P. Geo
Mining & Exploration Analytics

ebiconsultants@gmail.com

819 314 8081



Important Disclosures

Company	Ticker	Disclosures*
Abitibi Metals Corp.	AMQ: CSE	B, R

* Legend

- A The Mining Analyst, in his own account or in a family related account, owns securities in excess of 1,000 shares of the issued and outstanding equity securities of this issuer.
- B The Mining Analyst, in his own account or in a family related account, owns securities in excess of 10,000 shares of the issued and outstanding equity securities of this issuer.
- C The Mining Analyst, in his own account or in a family related account, owns securities in excess of 30,000 shares of the issued and outstanding equity securities of this issuer.
- D The Mining Analyst, in his own account or in a family related account, owns securities in excess of 50,000 shares of the issued and outstanding equity securities of this issuer.
- E The Mining Analyst, in his own account or in a family related account, owns securities in excess of 100,000 shares of the issued and outstanding equity securities of this issuer.
- F The Mining Analyst, in his own account or in a family related account, owns securities in excess of 250,000 shares of the issued and outstanding equity securities of this issuer.
- V The Mining Analyst has visited certain material operations of this issuer.
- P This issuer paid a portion of the travel-related expenses incurred by the Mining Analyst to visit material operations of this issuer.
- Q This issuer has directly paid the Mining Analyst.
- R This issuer has indirectly paid the Mining Analyst.

Mining Analyst Certification

I, Éric Lemieux, Mining Analyst, hereby certify that the comments and opinions expressed in this report accurately reflect my personal views about the subject and the issuer.

I determine and have final say over which companies are included in my research and do not have direct or indirect remuneration unless disclosed.

This report has been prepared for general information purposes only and should not be considered either a solicitation for the purchase or an offer of securities. This research note does not constitute a recommendation.

The securities mentioned in this report may not be suitable for all types of investors. The information contained in this report is not intended as individual investment advice and is not designed to meet any particular investment objectives, financial situations, or needs. Nothing in this report constitutes legal, accounting or tax advice.